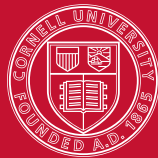




# 2014 Report to the Community

*images of our success*



Cornell University  
Cooperative Extension  
of Suffolk County



# Board of Directors - 2015

President - Maureen Fiorello  
Vice-President - Neely McCahey  
Treasurer - Richard Rudden  
Secretary - Barbara Jordan  
Maureen Arma  
Linda Gianelli  
Bruce Herlich  
Tim Hopkins  
Annette Maillard  
Patrick McAsey  
Mike McInerny  
James McMahan  
Rebecca Muellers  
Sharon Ott  
Charles Peck  
Jean Schmitt Anson  
Samantha Sourbeck  
Cheryl Taormina

Frank Beyrodt, Jr. - County Legislature Representative  
August Ruckdeschel - County Executive Representative  
Peter Landre - State Extension Specialist

The Cornell Cooperative Extension educational system enables people to improve their lives and communities through partnerships that put experience and research knowledge to work.

*Published by Cornell Cooperative Extension of Suffolk County*

Vito A. Minei, P.E., Executive Director  
Dale D. Moyer, Associate Executive Director  
Judi Lach Veeck, Public Affairs & Development Director  
Donna Giancontieri, Editor  
Rusty Tyler, Art Director

*Photo: A summer morning on the Long Island Sound in Southold at Peconic Dunes 4-H Camp.*

## *Dear Friend of Extension,*

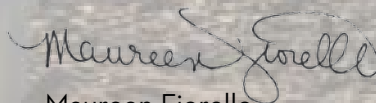
This was a year of launching new endeavors and continuing our ongoing educational programs aimed at fulfilling our mission to strengthen families and communities, protect and enhance our environment, foster economic development and promote sustainable agriculture. Educators from our four program areas—Agriculture, Family Health and Wellness, Marine and 4-H Youth Development—work directly with community leaders, families, and professionals.

Our Marine and Agriculture Programs staff work with farmers, growers and the fishing industry. We help preserve the agriculture and marine heritage so vital to Long Island and we help promote economic development, securing and creating jobs.

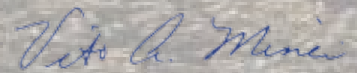
Our Family Health and Wellness Program brings education to families, schools and community groups to help improve health, nutrition and overall wellness for Suffolk families.

A big part of our mission is focused on our youth. By bringing our research-based expertise to community groups, schools, and municipalities, we work toward keeping Suffolk County a place where our kids want to stay, grow, work and raise their own families. Our 4-H youth development programs make learning science, technology, engineering and math (STEM) fun for kids.

CCE staff and volunteers partner with all levels of government, Cornell University, non-profit and community groups to make a difference for the next generation. We hope you enjoy this look back at some of CCE's 2014 accomplishments.



Maureen Fiorello  
Board President



Vito A. Minei, PE  
Executive Director

# Strengthening Families and Communities



## Helping Families

Our Family Health and Wellness Program offers free nutritional classes to teach parents to prepare healthy meals, free diabetes management classes, and free bilingual training for professionals working with young children. We provide free or low-cost professional development workshops that help staff at non-profits and other professionals receive local high-level training. We bring community gardens and farmers markets offering healthy alternatives to communities throughout Suffolk.

Our educators Marta Blanco and Claudia Clarke handed out healthy snacks at a farmers market.

## Promoting Health

Riverhead Councilwoman Jodi Giglio helped us bring bicycles and safety helmets to kids as part of our Creating Healthy Places program which promotes healthy lifestyles.

Creating Healthy Places in Suffolk County is a part of an initiative funded to the Family Health and Wellness Program by the New York State Department of Health. Creating Healthy Places aims to prevent obesity and type 2 diabetes by making it easier to access healthier food choices and increase physical activity. In Suffolk County, we are creating policy, systems and environmental changes in target communities.





### Encouraging Youth

Suffolk 4-H teams took first place in the qualifying round of a Robotics tournament sponsored by the national organization FIRST (For Inspiration and Recognition of Science and Technology). FIRST inspires interest in science and technology as teams strategize, build robots and compete.

CCE is dedicated to providing youth an understanding and appreciation of their environment and their health while offering a foundation of community service plus education in science, technology, engineering and math. Our youth programming is offered through camps, in schools, afterschool programs, and through 4-H Clubs. CCE's 4-H youth development helps get youth "unplugged" and out into their communities.

### Protecting Children

CCE nutritionist Maryann Birmingham worked with Suffolk County Executive Steve Bellone, Presiding Officer DuWayne Gregory and Legislator Dr. William Spencer to help develop legislation preventing the sale of powdered caffeine products to minors. After concerns were raised about potential health impacts of these products, especially for youth, CCE worked closely with county officials. The legislation, the first of its kind in the nation, was signed into law in November.



# Protecting and Enhancing the Environment



## Creating a Rain Garden

Suffolk County Legislator Monica Martinez helped staff from our Marine Program and students from the Brentwood School District in June to create a rain garden on the school grounds. The students prepared the garden and added native plantings. By absorbing the falling rain, this type of garden can help reduce the storm water runoff that pollutes our beaches, harbors and estuaries.

## Restoring Habitat

Our eelgrass restoration program restores acres of eelgrass in Suffolk waters and our staff advises on similar programs nationwide. We restore and monitor eelgrass, our dominant local sea grass species which provides habitat for many species of finfish and shellfish. Chris Pickerell, Marine Program Director illustrates the importance of our restoration projects during a tour of our Southold facility. (L-R) Lorne Brousseau, Associate Marine Program Director, Christopher Watkins, Director of Cornell Cooperative Extension, Peter Landre, State Extension Specialist, Chris Smith, CCE Senior Educator, Vito Minei, CCE Executive Director and Jamie Ferris of PW Wood & Son.





### Environmental Stewardship

Our Agricultural Stewardship staff help farmers and growers maximize efficiency of commercial agriculture while minimizing use of pesticides that can harm water quality. We provide the agricultural industry with a comprehensive program of research, education and on-farm demonstration projects to address the environmental issues related to agriculture’s use of nitrogen fertilizer and pesticides. Laurie Mickaliger McBride, Ag Stewardship Technician, scouts poinsettia plants for whitefly as part of a biological control trial in a Peconic greenhouse. Whiteflies are a common pest. The goal was to find an alternative form of pest control using beneficial insects instead of pesticides. We did weekly scouting to monitor pest pressure. If the pests are prevalent, the plant health suffers.

### Protecting Our Bays

In 2014, CCE was awarded \$258,925 from the NOAA Marine Debris Program and matching grants for the removal of abandoned lobster traps and other fishing gear from the Long Island Sound. Members of the Long Island Lobstermen’s Association and CCE marine staff, including Jacqueline Wilson, worked together to identify the location of the gear, remove it safely from the seabed, and have it recycled at nearby facilities. This program is integral to our efforts to provide education on the importance of natural resources preservation.



# Fostering Economic Development



## Improving Economic Sustainability

CCE programs lead to healthier lifestyles, stronger core families, and better protected natural resources—all of which directly impact positive economic development in Suffolk County. For nearly a century, CCE has been a trusted source of research-based information. Our Marine Program experts work with fishermen and environmental groups to protect and sustain finfish, shellfish and habitats. Nearly ten years after its inception, our bay scallop restoration program led to a thriving scallop season in 2014. Our efforts rebuilt Peconic Bay Scallop populations which were destroyed by algal blooms nearly to the point of extinction in the 1980s and 1990s. This work received financial assistance from Suffolk County and Empire State Development through the LI Regional Economic Development Council. CCE Senior Educator Chris Smith explains efforts for the Peconic Bay Scallop Restoration Project to Ken Adams, President of Empire State Development, Kevin Law, co-chair of LI Regional Economic Development Council, Andrea Lohneiss, Regional Director of the Empire State Development and Vito Minei, CCE Executive Director.



## Building a Strong Economic Foundation

The economy of Suffolk derives hundreds of millions of dollars from marine and agriculture related businesses. Our assistance and guidance helps sustain, safeguard and bolster these vital industries. This provides a legacy and an economic foundation for the next generation to continue to work and live here on Long Island.

Our Agriculture Program staff works directly with farmers and growers to help them sustain their livelihood while learning ways to protect the environment. More than 3,000 professionals attended our agricultural forums, lectures and workshops in 2014.

Nora Catlin, CCE's Floriculture Specialist, conducts demonstration trials of annual plant and poinsettia cultivars as well as applied research on various aspects of integrated pest management and crop production.



# *Promoting Sustainable Agriculture*

## **Protecting Agricultural Heritage**

Sustaining the agricultural heritage of Long Island is a key component of our accomplishments. By working with farmers and growers on safer pest management practices and cost-effective crop production techniques, we help protect the environment and create future economic opportunities for today's youth. In addition, our sustainable viticulture program will help the thriving wine industry on Long Island continue, providing a solid economic foundation for the next generation. Annually, more than a million tourists visit the area's wineries, which last year produced half million cases of wine.

## **Gardening for all Ages**

We give kids their first experience gardening and growing produce at the Children's Garden and summer camp programs at the Suffolk County Farm and Education Center. Here, they learn an appreciation for agriculture and gardening. Perhaps when they grow up, these young gardeners will join our Master Gardeners program which offers extensive horticulture instruction to participants who then volunteer in Suffolk community gardens on beautification projects and teach others their expertise.





# 2014 in Review



CCE Executive Director Vito Minei received a proclamation from Suffolk County Executive Steve Bellone at the annual **Grown on Long Island Countywide Farmers Market**.

4-H teen chefs joined Whole Foods and the Bloomingdales Fund at our **Third Annual Junior Iron Chef Competition** where the young chefs used local and healthy food items to cook creative meals and compete for prizes and the title of Junior Iron Chef!

Our annual **Baby Animal Day** at the Suffolk County Farm in Yaphank drew more than 3,000 visitors to the historic working farm.

Newly elected **Congressman Lee Zeldin** spent an afternoon with farmers, fishermen and our staff here at CCE to learn about some of the concerns and challenges facing local agricultural and marine industries.



One of our animal care technicians, Gia Codispotti, harvests potatoes in the **Backyard Farm** at the Suffolk County Farm and Education Center. The Backyard Farm is an educational garden where visitors connect with sustainable agriculture. The garden was made possible through a grant from National Grid.



CCE received a five-year \$6.5 million grant from the NYS Office of Temporary and Disability Assistance to oversee Long Island's **Supplemental Nutrition Assistance Program/ Eat Smart New York** (SNAP-Ed/ESNY). As part of this educational program, CCE will help families increase consumption of healthy foods, decrease sugar intake and promote physical activity. The Healthy Corner Stores Project kicked off in Mastic Beach at the Neighborhood Country Market with owner Abdul Rattu and Suffolk County Legislator Kate Browning. The initiative aims to improve the quality of food on local store shelves.

# CCE Camps

Our camps provide a fun and educational experience and get kids unplugged and outdoors. Camps run during the summer and we also host school break camps in winter and spring! CCE camps are located in Northport, Yaphank, Peconic, Southold, and East Hampton.





# Jazz Under the Moonlight

Our Jazz Under the Moonlight fundraiser at Baiting Hollow Golf Club was held on a perfect September evening. CCE supporters and staff enjoyed local seafood and wine and jazz music.





# Community Support

*Thank you to all of our friends and supporters.*

## **\$10,000 and over**

Don Thompson

## **\$5000 to \$9999**

James Goldman  
Timothy Hogue  
The Robins Island Foundation LLC

## **\$2000 to \$4999**

Andrew Sabin Family Foundation  
Barrier Beach Preservation Assoc., Inc.  
Eastern Bays Company, Inc.  
Irwin and Flora Garsten  
Rotary Club of Greenport  
Richard J. Rudden

## **\$500 to \$1999**

Asberine Parnell Alford  
Karl Auwaerter, Bayport Flower Houses  
Bay Burger  
Frank Beyrodt, Jr.  
Brookhaven Lab  
CJ Van Bourgondien, Inc.  
First Coastal Consulting  
William Geraghty  
April Gonzales  
Timothy Hopkins  
Jericho Brookville Lions  
Barbara Jordan  
Edie Landeck  
Alice Levien  
Long Island Nurseryman's Assoc.  
Mike McInerney  
Vito and Lorraine Minei  
Thomas Mohrman  
Nassau-Suffolk Landscape Gardeners Assoc.  
Nawrocki Smith LLP  
Richard and Nancy Olsen-Harbich  
Oyster Ponds Shellfish LLC  
Paul Pomerantz  
Gordon Potts  
Jeff Rottkamp  
Thomas W. Roush  
Sea Tow  
John Stehle  
James Sweeney  
Jack and Alice Van de Wetering  
The Wechsler Foundation  
Stephen Weir, Farm Credit East  
Gordon Whiting  
Whitmore's  
Jeffrey and Lisa Wilks

## **\$250 to \$499**

Albert H. Schmitt and Sons  
Jean Schmitt Anson  
Kevin Cantwell

Claire Caputo  
John Daley  
EN Consultants  
Maureen Fiorello  
Robert Grosbard  
Martin Haley  
Halsey Barbour Custom Builders  
Bruce and Catherine Herlich  
George and Carol Ann Hochbrueckner  
William Houck  
Mary K. Howe  
Cleveland Johnson, Jr.  
Al and Mary Krupski, Jr.  
John and Ray P. Kujawski  
Dorothy Laffin  
Gary Loesch, H2M Group  
Long Island Arbicultural Association  
Long Island Farm Bureau  
Howard Ludecker  
Charles and Ursula Massoud, Paumanok  
Vineyards  
Patrick McAsey  
Thomas Mohrman  
Dale D. Moyer  
Rebecca Muellers  
Gerald and Sharon Olender  
David and Lisa Paul  
Ron and Gwen Paulsen  
James M. Pike  
PW Grosser Consulting  
Frank M. Russo, H2M Group  
Charles F. Scheer, Jr.  
Raymond and Patricia St. Denis  
Suffolk County National Bank  
Christine Tobin  
Ralph Tuthill, LaMay Tree Service

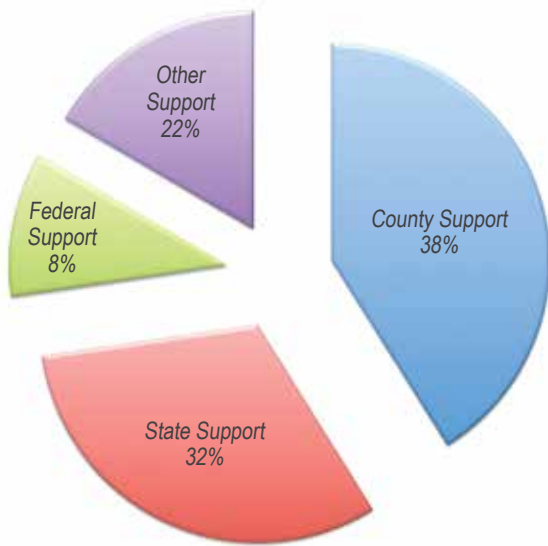
## **\$100 to \$249**

Andrew Baehr  
Ernest and Lisa Bastiaans  
Steve Bate  
Bellport Garden Club  
Matthew Cline  
Joseph G. Broyles  
Marilyn P. Corwith  
Carol Curtis  
Vincent Daley  
Mark Davis, Bianchi-Davis Greenhouse  
Barbara Dragone  
Harold Fessenden  
Vicki Fleming  
Linda Gianelli  
Mary C. Golden  
John Goldman  
Kathleen Griffin  
Christopher Haak

Mike Hagerman, Academy Printing  
Deborah Hanley  
Philip Harris  
Jean Held  
Jane Hollander  
Patricia Thayer Hope  
IPRO  
Joel Itzkowitz  
Jackson Dodds & Co., Inc.  
George LaMay, La May Tree Service  
Richard LaValle  
Long Island Environment Network  
Sharon Lukach  
Annette Maillard  
Timothy and Cynthia Maran  
Martin Viette Nurseries  
T. James Matthews  
Carol Mandel & Vincent Covello  
Mary Lou Mauro  
Dana Miklos  
Moriches Bay Garden Club  
Virginia Mueller  
Sharon Oliver-Murthy  
Wilbur Osler  
Sharon Ott  
Brian Parker  
Cindy Philbin  
Christopher Pickerell  
Cheryl Pufahl  
Michael Reilly  
Niel I. Rising  
Otto Schmid  
Haig Seferian  
Jennifer Shaer, MD  
Michael Sperendi  
Herbert Strobel  
Summer Hill Plant Health Care  
Sumpwam's Garden Club  
Daniel Swistel, MD  
Three Harbors Garden Club  
George Tvelia  
Carole Vande Velde  
Karl Vermandois  
VerDerBer's Nursery  
Michael Verruto  
Paul Vogel  
Robert Whitcomb  
Marian Williams  
James Wojcik  
Caryn Yakoboski  
Joe and Judy Zalner  
Leila Zogby

# Financial Support

## 2014 Annual Resources Support



### County

Annual Appropriation . . . . .	2,254,040
Other County Support. . . . .	1,833,892
Other County/Value of Building Space . . . . .	1,013,502
<b>TOTAL COUNTY SUPPORT (38%). . . . .</b>	<b>\$5,101,434</b>

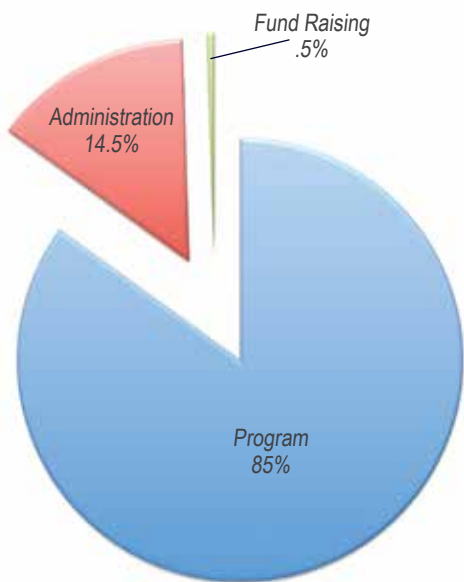
### State

County Law 224 Formula . . . . .	239,533
Special Projects: Funded by the State through Cornell University . . . . .	28,871
Special Projects: Funded by the State Direct to Suffolk Extension . . . . .	462,551
Fringe Benefits . . . . .	3,555,338
<b>TOTAL STATE SUPPORT (32%). . . . .</b>	<b>\$4,286,293</b>

### Federal

Smith Lever . . . . .	49,601
Expanded Food and Nutrition Program (EFNEP) . . . . .	120,111
Special Projects: Funded By Federal	
Funds through Cornell University . . . . .	154,549
Special Projects: Funded By Federal	
Funds Direct to Suffolk Extension . . . . .	808,850
<b>TOTAL FEDERAL SUPPORT (8%) . . . . .</b>	<b>\$1,133,111</b>

## 2014 Functional Expenditures



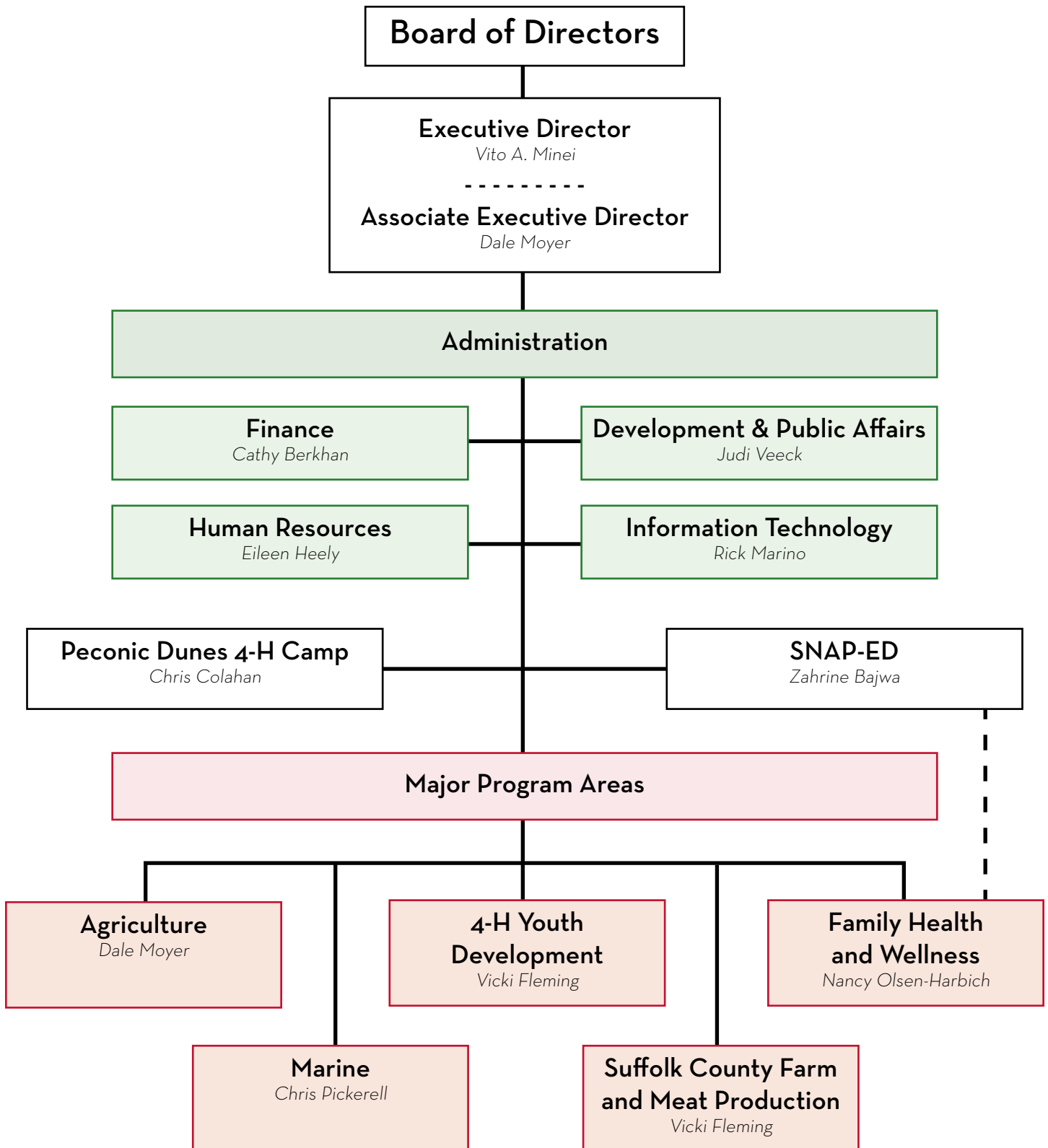
### Other Sources of Support

Enrollment Fees, Program Participation Fees. . . . .	1,725,289
Sale of Equipment, Income from Publications, Dividend Income, . . . . .	
Interest, Facilities Use, Fundraising, Miscellaneous Sources . . . . .	207,018
Restricted and Unrestricted Contributions . . . . .	231,348
Special Projects: Funded through Cornell University . . . . .	28,128
Special Projects: Funded by Local Agency or other Sources. . . . .	855,048
<b>TOTAL OTHER SOURCES OF SUPPORT (22%). . . . .</b>	<b>\$3,046,830</b>

**GRAND TOTAL OF ALL SUPPORT . . . . . \$13,567,668**

In addition to these sources of support, Cornell Cooperative Extension of Suffolk County depends heavily on volunteer support for its many and varied educational programs. In 2014, 738 volunteers contributed 23,028 hours valued at \$519,276. Included in the accounting records is the value of donated materials and supplies, as well as equipment and facilities usage, with a value totaling \$132,927.

# CCE Suffolk Organizational Chart



# Site Locations

## Extension Education Center

423 Griffing Avenue, Suite 100  
Riverhead, NY 11901-3071  
631-727-7850 • FAX: 631-727-7130  
suffolk@cornell.edu

## 4-H Youth Development and Diabetes Education Center

350 Yaphank Avenue, Yaphank, NY 11980  
4-H: 631-852-4959 • Diabetes: 631-852-5193  
FAX: 631-852-4650

## Community Nutrition Education Program

*Eastern Suffolk EFNEP and Eat Smart New York*  
423 Griffing Avenue, Suite 100  
Riverhead, NY 11901-3071  
631-727-7850 • FAX: 631-727-7130

*Western Suffolk EFNEP and Eat Smart New York*  
c/o The Town of Babylon, Buildings and Grounds,  
999 N. Indiana Ave., Lindenhurst, NY 11757  
631-957-3158 • FAX: 631-957-7497

## Insect and Plant Disease Diagnostic Labs

*Eastern Suffolk*  
423 Griffing Avenue, Suite 100  
Riverhead, NY 11901-3071  
Lab Hours: 8:30 am to 4:30 pm  
Hort Info Line: 631-727-4126, 9:00 am to Noon  
FAX: 631-727-7130

*Western Suffolk*  
Bayard Cutting Arboretum, Montauk Highway  
P.O. Box 463, Oakdale, NY 11769-0463  
Lab Hours: Tues. - Fri. - 8:30 am to 4:30 pm  
Hort Info Line: 631-581-4223; Tues. - Fri.  
8:45 am to 11:45 am • 1:00 pm - 4:00 pm

## Long Island Horticultural Research and Extension Center

3059 Sound Avenue, Riverhead, NY 11901-1098  
631-727-3595 • FAX: 631-727-3611

## Peconic Dunes Summer Camp

6375 Soundview Avenue, Peconic, NY 11958  
631-852-8627 • FAX: 631-852-8628  
Nature Center: 631-852-8629

## South Fork Marine Education Program

301 Bluff Road, P.O. Box 2603  
Amagansett, NY 11930  
631-767-5171

## Suffolk County Farm and Education Center

350 Yaphank Avenue, Yaphank, NY 11980  
631-852-4600 • FAX: 631-852-4606  
Animal Helpline: 631-852-4603

## Suffolk County Marine Environmental Learning Center

3690 Cedar Beach Road, Southold, NY 11971  
631-852-8660 • FAX: 631-852-8662

## Western Suffolk Marine Education Program

P.O. Box 554, Huntington, NY 11743  
631-239-1800 • FAX: 631-239-1797

Visit us at our website: [www.ccesuffolk.org](http://www.ccesuffolk.org)



Find us on  
**Facebook**



Follow us on  
**twitter**

Cornell Cooperative Extension is an employer and educator recognized for valuing AA/EEO, Protected Veterans, and Individuals with Disabilities and provides equal program and employment opportunities.

Cornell Cooperative Extension is funded in part by Suffolk County through the office of the County Executive and the County Legislature.

Please contact the Cornell Cooperative Extension of Suffolk County office if you have any special needs.