



Range Map
(Provided by [IUCN Red List](#))

LINED SEAHORSE

Hippocampus erectus

Vulnerable

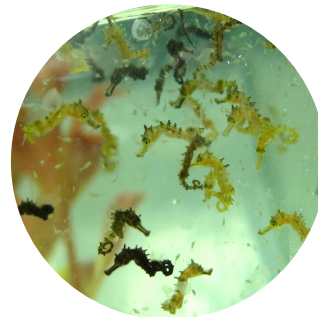
Conservation Status
Vulnerable

FACT ONE



The name *Hippocampus* is derived from Ancient Greek words for "horse" and "sea monster," but seahorses are docile and vulnerable fish.

FACT TWO



Seahorses are true bony fish but instead of scales, they have skin stretched over bony plates and can be found in a variety of colors.

FACT THREE



Seahorses are the only species in the entire animal kingdom, in which the male gets pregnant. Pairs generally mate for life!

FACT FOUR

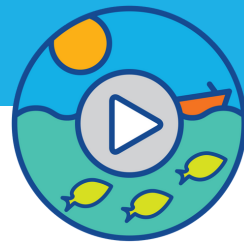


Mating partners of seahorses greet each other every day with a courtship ritual that involves color changing displays and dancing.

For more information about Seahorses:

CCE's Seahorse Conservation Initiative
ccesuffolk.org/seahorses

Project Seahorse
projectseahorse.org



Overview

The lined seahorse is a unique species of **fish** native to Long Island waters, specifically in **eelgrass beds**. Unique features include a **prehensile** tail, eyes that can move independently of each other, and a horse-like head! Even though they lack teeth and a stomach, seahorses eat a *lot* of **amphipods**, **copepods** and other small **crustaceans**.

Life History

Not only are lined seahorses **monogamous**, but they also exhibit **site fidelity** and rarely travel far from home. After a female transfers eggs into the male's brood pouch, eggs are fertilized and incubate for approximately 21 days until the male gives birth to up to 300 tiny, fully formed juveniles! Seahorses are closely related to **pipefish** and **seadragons**. Their lifespan is about 1-4 years.

Status

Although they have few predators, the lined seahorse is considered a **vulnerable** species with declining populations. In fact, **habitat loss** is the most significant factor to seahorse population declines worldwide. **Seagrass meadows** and coral reefs are their preferred habitat types worldwide, and these docile, slow swimming and **cryptic** fish are highly susceptible to environmental changes.

How You Can Help

You can help lined seahorses by protecting their natural habitat, spreading awareness and to never take them from the wild. Did you know CCE Marine Program has two ways you can help lined seahorses? Visit ccesuffolk.org/marine for more information about, or to get involved with, our **Marine Meadows Initiative** and **Seahorse Conservation Initiative!**

The docile, slow swimming lined seahorse is considered a vulnerable species. Populations continue to decline, as they are highly susceptible to environmental changes.



Cornell Cooperative Extension | Marine Program



Cornell Cooperative Extension is an equal opportunity, affirmative action educator and employer. Cornell Cooperative Extension is funded in part by Suffolk County through the office of the County Executive and the County Legislature. Learn more at CCESuffolk.org/Marine.

stay connected.

✉ ccemarine@cornell.edu

🌐 ccesuffolk.org/marine or backtothebays.org

📘 @ccemarineprogram

📷 @ccemarineprogram

▶ [ccemarineprogram](https://www.youtube.com/channel/UC...)